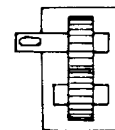
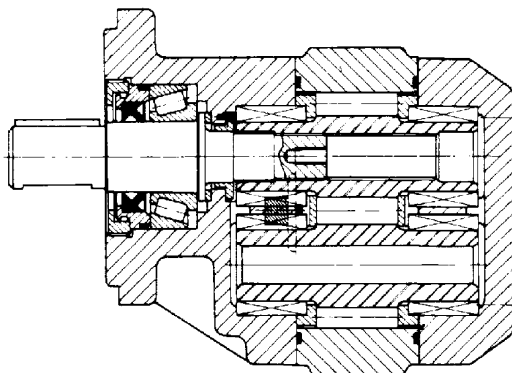
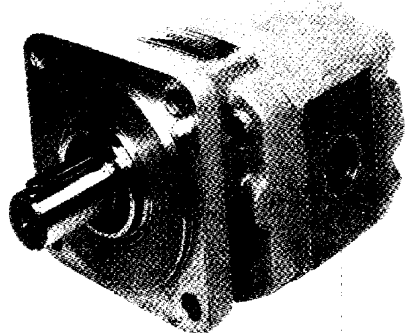


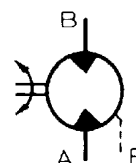
GPM Gear Motors Series 110

Size : 30~200
 Rated Press. : 175 kgf/cm²
 Max. Press. : 210 kgf/cm²



Cat. G110

● Symbol



● Technical Data (theoretical values)

model		GPM 1						
size		30	40	50	63	80	90	100
Displacement	cc/rev	31.2	40.5	49.9	65.5	81.1	93.6	102.7
torque const.	kgf-m/kgf/cm ²	0.049	0.064	0.079	0.104	0.129	0.149	0.163
differential press.	kgf/cm ²	175						
max. pressure	kgf/cm ²	210						
speed	max.	2,700						
rpm	min.	400						
max. torque	kgf-m/kgf/cm ²	8.6	11.2	13.8	18.2	22.5	26.1	28.5
max. output	kw	28.8	31.0	38.2	50.4	62.3	72.3	73.1
weight	SAE-flange mount.	20.5	21	21.5	23	24	25.2	25.5
kgf	mount. foot	8.5						

model		GPM 2				
size		100	125	150	180	200
displacement	cc/rev	104.0	129.9	150.7	181.9	202.7
torque const.	kgf-m/kgf/cm ²	0.165	0.206	0.239	0.289	0.322
differential press.	kgf/cm ²	175	175	175	140	140
max. pressure	kgf/cm ²	210	210	210	175	175
speed	max.	2,300				
rpm	min.	400				
max. torque	kgf-m/kgf/cm ²	28.9	36.1	41.8	40.5	45.1
max. output	kw	68.2	85.2	98.6	95.5	106.4
weight	SAE-flange mount.	38	39.5	41	43	44
kgf	mount. foot	8.5				

● Ordering Code

GPM 1 - AO C 40B 1 F - 11※

① ② ③ ④ ⑤ ⑥ ⑦ ⑧

① Type

GPM = GPM type gear motors

② Model

- 1 = model 1
- 2 = model 2

③ Drive shaft

- straight keyed shaft

model	type code	standard	O.D.mm
1	AO		∅32
2	AO		∅32
	BO		∅45

- SAE · splined shaft

model	type code	standard	O.D.mm
1	CO	SAE "C"-14T	∅31.2
2	CO	SAE "C"-14T	∅31.2
	DO	SAE "D"-13T	∅43.7

- straight shaft (only for foot mounting)

model	type code	standard	O.D.mm
1	FO		∅32
2	FO		∅40

④ Shaft end cover

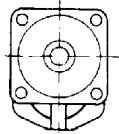
- Model 1

C = SAE "C" 4 hole flange

- Model 2

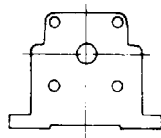
C = SAE "C" 4 hole flange

D = SAE "D" 4 hole flange



- Model 1, 2

E = foot mounting



⑤ Size (gear housing code)

- with ports connection

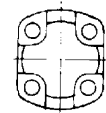
size	motor model/code	
	1	2
40	40B	
50	50B	
63	63B	
80	80B	
90	90B	
100	100B	100B
125		125B
150		150B
180		180B
200		200B

- without ports connection

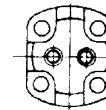
size	motor model/code	
	1	2
30	30N	
40	40N	
50	50N	

⑥ Port end cover

- 1 = without port

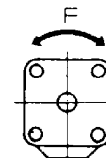


- 2 = with both ports



⑦ Shaft rotation

- F = bi-direction



⑧ Design series

- 110 = series 110

(110 to 119 = installation and connection dimensions remain unchanged.)